

Questions & Answers

How do I get curbside recycling service?

If you wish to start receiving curbside recycling services, just call Moscow Recycling at **882-0590**. If you are able to come to our facility we will sign you up, familiarize you with our services and supply you with our curbside recycling bins. If you are unable to pick up your bins, we can have them delivered to your residence (*to be eligible for curbside service you must reside in a residential dwelling or an apartment with no more than four units and garbage can service*).

What day do I set out my curbside bins?

Your curbside recycling bins should be set out for collection by 7:00 a.m. the **same day** you set out your garbage.

Where do I place my curbside recycling bins?

Set your curbside recycling bins near the location used for garbage collection.

What if I have more materials than bin space?

As long as your recyclables are sorted (see instructions on other side), you may set them out in any extra bin(s)/boxes/bags that you may possess. Just make sure that they won't blow away on a windy day!

What if I place non-recyclables in my bins?

If there are items in your bins that are not recyclable, the recycling collector will leave these items in your bins.

Why are some items not taken on curbside?

Our curbside recycling truck has a limited number of compartments so we are unable to take every item that we accept at Moscow Recycling. Please bring these items to our 24 hour drop off area at 401 N. Jackson Ave. Check out our web page, **MoscowRecycling.com**, for a full list of recyclables we accept.

What if my recyclables get wet?

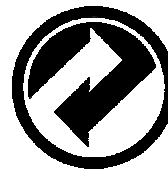
Don't worry, if your recyclables get wet, it's OK.

What's an "Oops!" Tag?

Oops! Tags are a neon green sticker that will help you identify why items may have been left behind by the driver.

Please note that the curbside recycling bins are the property of Moscow Recycling. Bins are to remain with the property, not the occupant, in the event of a move.

Printed on Recycled Paper
With Soy-Based Ink 07/07



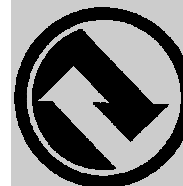
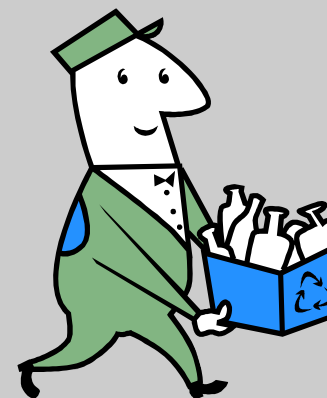
Latah Sanitation, Inc./Moscow Recycling
P.O. Box 9385
Moscow, ID 83843



Your Guide To

Curbside Recycling

You Can Set Out Up To
12 Different Recyclables
Every Week!



Stamp

Latah Sanitation, Inc. 882-5724
Moscow Recycling 882-0590
www.MoscowRecycling.com
MoscowRecycling@turbonet.com

Missed Collections?

To ensure uninterrupted service, please follow the instructions outlined in this brochure.



If your recyclables are not collected, please call Moscow Recycling at **882-0590** as soon as possible.

In most cases, your missed recyclables will be collected by 5:00 p.m. the same day you call. If you call late in the day, your recyclables will be collected by 5:00 p.m. the following day.

Most missed collections can be avoided by having your recyclables set out by 7:00 a.m. on your collection day.

Sorting Instructions

The following sorting guidelines are intended as one possible way to sort your recyclables. What's important, is that your recyclables are sorted so the driver is able to collect them efficiently. If you have a system that works for you, and for us, that's great!

Separate each different item for recycling into paper grocery bags or as shown in the example to the right (further definitions for each recyclable item are listed in the *Materials Accepted* section of this brochure). We prefer paper bags over plastic bags because they are recyclable, they do not have handles for recyclables to get held up on when dumping them and they don't stick to the recyclables when they are wet. If you need paper bags, we always try to keep some on hand at Moscow Recycling for your use. Just come on down and pick some up! We appreciate your assistance in this matter.



If you have more materials than will fit in one bag, you can place more than bag of this material out for collection. You may also choose to place this material in an extra box or crate that you may possess (e.g. extra bag(s) or box(es) of Mixed Waste Paper).

Recyclables Accepted

Aluminum Cans

Batteries:

Household/Alkaline batteries only (rechargeable batteries only accepted at Moscow Recycling).

Shredded Paper:

Place out in a tied off plastic bag with your other recyclables.

Glass Bottles & Jars:

Clear, green, brown and blue glass. No windows, drinking glasses, light bulbs, mirrors, or pyrex.

Mixed Waste Paper:

Includes junk mail, computer and white ledger paper, file folders, brochures, single ply boxboard (e.g. cereal boxes), pulpboard (e.g. egg cartons), construction, wrapping and tissue paper, paper towel cores, catalogs, shoe boxes, milk, soy and juice cartons (aseptic), etc. **No** napkins, paper towels or plates, tissues or hard bound books.

Magazines

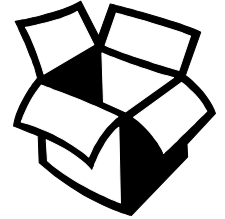
Newspaper



Phone Books:

May be placed with Newspaper.

Cardboard



Tin/Steel Cans



PETE

Plastic: See-through plastic Bottles and Containers. They can have color like green Mountain Dew bottles as long as you can see through it.



HDPE

Plastic: Opaque Milk Jugs and similar containers.

Bin Sorting Example

Bag 1:
Magazines

Bag 2:
Mixed Paper

Bag 3:
#1 Plastic
#2 Milk

Bag 4:
Aluminum
Cans

Bag 5:
Glass

Bag 6:
Tin Cans



Phone Books



Place Newspapers Under Bin and Phone Books by the Bin



Place Batteries in Baggie and Place In Bin



Place Flattened Corrugated Cardboard and Brown Paper Grocery Sacks Under Bin